

Client's name / Tên khách hàng : CÔNG TY TNHH HƯNG ĐÔNG PHÁT

Client's address / Địa chỉ : THỪA ĐẤT 794, TỜ BẢN ĐỒ SỐ 13, KHU PHỐ ÔNG ĐÔNG,
PHƯỜNG TÂN HIỆP, THỊ XÃ TÂN UYÊN, TỈNH BÌNH DƯƠNG,
VIỆT NAM

The following sample(s) was/were submitted and identified by the client as:

Các thông tin nhận dạng mẫu do khách hàng cung cấp:

Name of sample / Tên mẫu : STEEL / THÉP

Dimension / Kích thước : 150 x 25 mm

Quantity / Số lượng mẫu : 01 sample / mẫu

Date of receiving / Ngày nhận mẫu : 12-May-2023

Date of testing / Ngày thử nghiệm : From / từ 12-May-2023 to / đến 19-May-2023

Test result / Kết quả thử nghiệm : See the next page(s) / Xem trang sau



SGS authenticate the photos on original report only / SGS chỉ xác thực các hình ảnh trong báo cáo chính thức

Test Requested / Yêu cầu thử nghiệm	Conclusion / Kết luận
RoHS Directive 2011/65/EU Annex II [amended by Directive (EU) 2015/863] (Cadmium, Lead, Mercury, Hexavalent chromium, Polybrominated biphenyls (PBBs), Polybrominated diphenyl ethers (PBDEs)) - As client's requirement Thử tính độc hại - Theo yêu cầu khách hàng	Comply / Phù hợp See result next page(s) / Xem kết quả trang sau

Signed for and on behalf of
SGS Vietnam LTD

Thay mặt công ty

SGS Vietnam Ltd

Pham Quang Hien
NR OGC and I&E Laboratory Manager
Industrial ServicesThis document is issued by the Company under its General Conditions of Service accessible at <http://www.sgs.com/en/Terms-and-Conditions.aspx>. Attention is drawn to the limitation of liability, indemnification and jurisdiction issues defined therein.

Any holder of this document is advised that information contained hereon reflects the Company's findings at the time of its intervention only and within the limits of Client's instructions, if any. The Company's sole responsibility is to its Client and this document does not exonerate parties to a transaction from exercising all their rights and obligations under the transaction documents. Any unauthorized alteration, forgery or falsification of the content or appearance of this document is unlawful and offenders may be prosecuted to the fullest extent of the law.

Test results / Kết quả thử nghiệm:

RoHS Directive 2011/65/EU Annex II [amended by Directive (EU) 2015/863] / Thử tính độc hại

Test Item(s) Chỉ tiêu thử nghiệm	Unit Đơn vị	Test Method Phương pháp thử nghiệm	Results Kết quả	RL	Limit
Cadmium (Cd)	mg/kg	With reference to IEC 62321-5:2013 (Determination of Cd by ICP-OES)	ND	2	100
Lead (Pb)	mg/kg	With reference to IEC 62321-5:2013 (Determination of Pb by ICP-OES)	ND	2	1000
Mercury (Hg)	mg/kg	With reference to IEC 62321-4:2013 + A1:2017 (Determination of Hg by ICP-OES)	ND	2	1000
Hexavalent Chromium (CrVI) #	µg/cm ²	With reference to IEC 62321-7-1:2015 (Determination of CrVI by UV-VIS)	ND	0.10	-
Sum of PBBs	mg/kg	With reference to IEC 62321-6:2015 (Determination of PBB by GC-MS)	ND	-	1000
Monobromobiphenyl	mg/kg		ND	5	-
Dibromobiphenyl	mg/kg		ND	5	-
Tribromobiphenyl	mg/kg		ND	5	-
Tetrabromobiphenyl	mg/kg		ND	5	-
Hexabromobiphenyl	mg/kg		ND	5	-
Pentabromobiphenyl	mg/kg		ND	5	-
Heptabromobiphenyl	mg/kg		ND	5	-
Octabromobiphenyl	mg/kg		ND	5	-
Nonabromobiphenyl	mg/kg		ND	5	-
Decabromobiphenyl	mg/kg		ND	5	-
Sum of PBDEs	mg/kg	With reference to IEC 62321-6:2015 (Determination of PBDE by GC-MS)	ND	-	1000
Monobromodiphenyl ether	mg/kg		ND	5	-
Dibromodiphenyl ether	mg/kg		ND	5	-
Tribromodiphenyl ether	mg/kg		ND	5	-
Tetrabromodiphenyl ether	mg/kg		ND	5	-
Pentabromodiphenyl ether	mg/kg		ND	5	-
Hexabromodiphenyl ether	mg/kg		ND	5	-
Heptabromodiphenyl ether	mg/kg		ND	5	-
Octabromodiphenyl ether	mg/kg		ND	5	-
Nonabromodiphenyl ether	mg/kg		ND	5	-
Decabromodiphenyl ether	mg/kg		ND	5	-

*** TO BE CONTINUED ***



This document is issued by the Company under its General Conditions of Service accessible at <http://www.sgs.com/en/Terms-and-Conditions.aspx>. Attention is drawn to the limitation of liability, indemnification and jurisdiction issues defined therein.

Any holder of this document is advised that information contained hereon reflects the Company's findings at the time of its intervention only and within the limits of Client's instructions, if any. The Company's sole responsibility is to its Client and this document does not exonerate parties to a transaction from exercising all their rights and obligations under the transaction documents. Any unauthorized alteration, forgery or falsification of the content or appearance of this document is unlawful and offenders may be prosecuted to the fullest extent of the law.

Note / Ghi chú :

1. mg/kg = ppm; 0.1wt% = 1000ppm
2. RL = Reporting Limit / Giới hạn báo cáo
3. ND = Not detected / Không phát hiện
4. - = not regulated / Không quy định
5. The maximum permissible limit is quoted from RoHS Directive (EU) 2015/863. / Giới hạn tối đa cho phép được trích dẫn từ Chỉ thị RoHS (EU) 2015/863.
6. IEC 62321 series is equivalent to EN 62321 series / IEC 62321 tương đương với EN 62321
http://www.cenelec.eu/dyn/www/f?p=104:110:721668440899381:::FSP_PROJECT,FSP_LANG_ID:20662,25
7. # =
 - a. The sample is positive for CrVI if the CrVI concentration is greater than 0.13 µg/cm². The sample coating is considered to contain CrVI.
Mẫu dương tính với CrVI nếu nồng độ CrVI lớn hơn 0.13 µg/cm². Lớp phủ mẫu được coi là có chứa CrVI.
 - b. The sample is negative for CrVI if CrVI is n.d. (concentration less than 0.10 µg/cm²). The coating is considered a non-CrVI based coating.
Mẫu âm tính với CrVI nếu không phát hiện CrVI (có nồng độ nhỏ hơn 0.10 µg/cm²). Lớp phủ mẫu được coi là không có CrVI.
 - c. The result between 0.10 µg/cm² and 0.13 µg/cm² is considered to be inconclusive - unavoidable coating variations may influence the determination.
Với nồng độ từ 0.10 µg/cm² đến 0.13 µg/cm² thì không kết luận – các biến thể của lớp phủ có thể ảnh hưởng đến việc xác định.
8. Information on storage conditions and production date of the tested sample is unavailable and thus Cr(VI) results represent status of the sample at the time of testing. / Thông tin về điều kiện bảo quản và ngày sản xuất của mẫu thử nghiệm không có sẵn và do đó kết quả Cr (VI) thể hiện trạng thái của mẫu tại thời điểm thử nghiệm.
9. The above test(s) was / were accredited ISO 17025:2017 by VILAS / Chỉ tiêu được công nhận ISO 17025: 2017 bởi VILAS.
The above test(s) was / were performed by SGS VN's Chemical lab / Chỉ tiêu được thực hiện bởi Phòng thử nghiệm hóa của Công ty SGS Việt Nam.

*** TO BE CONTINUED ***

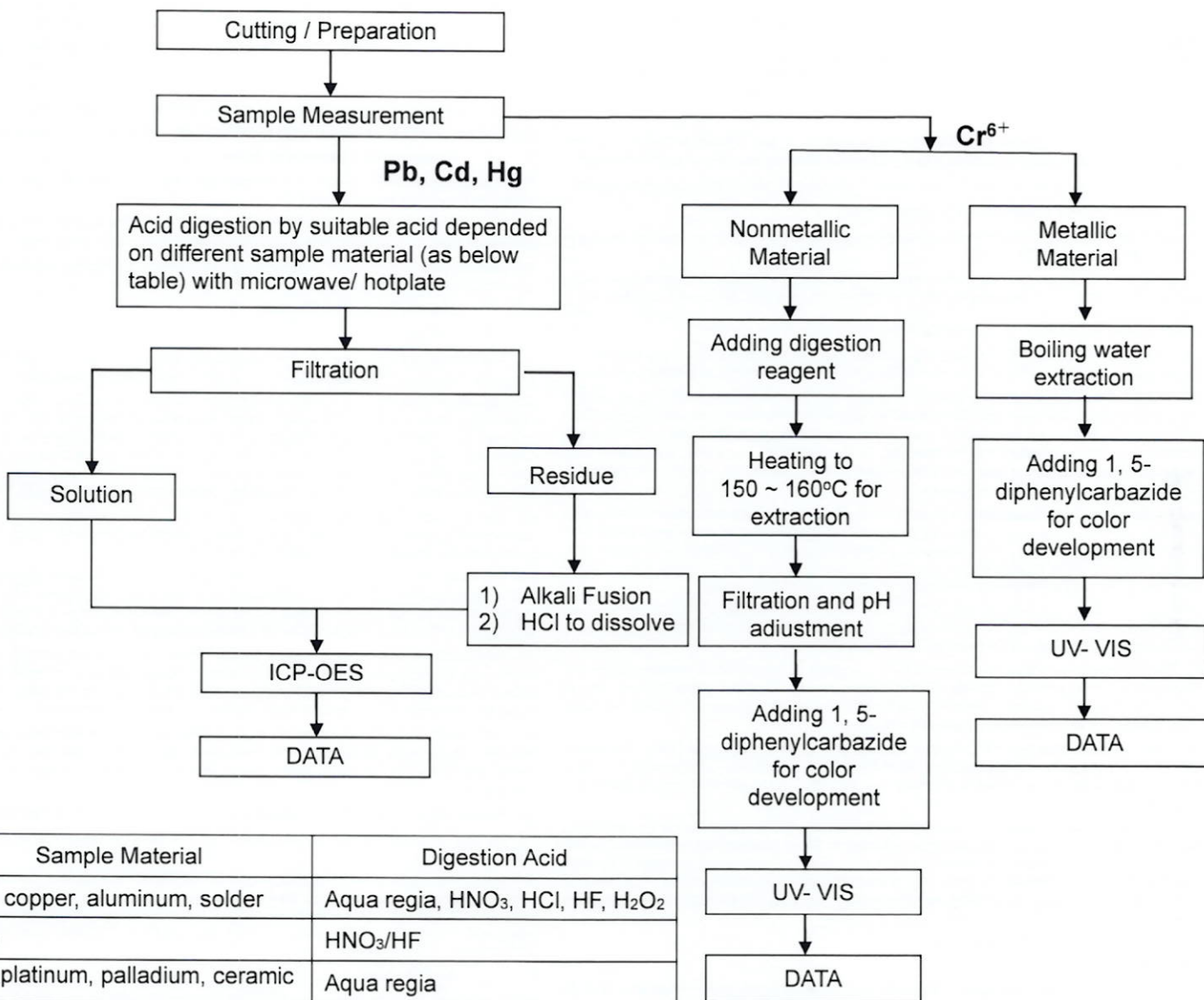
This document is issued by the Company under its General Conditions of Service accessible at <http://www.sgs.com/en/Terms-and-Conditions.aspx>. Attention is drawn to the limitation of liability, indemnification and jurisdiction issues defined therein.

Any holder of this document is advised that information contained hereon reflects the Company's findings at the time of its intervention only and within the limits of Client's instructions, if any. The Company's sole responsibility is to its Client and this document does not exonerate parties to a transaction from exercising all their rights and obligations under the transaction documents. Any unauthorized alteration, forgery or falsification of the content or appearance of this document is unlawful and offenders may be prosecuted to the fullest extent of the law.

108555

Flow Chart for RoHS: Pb/Cd/Hg/Cr⁶⁺ Testing

These samples were dissolved totally by pre-conditioning method according to below flow chart.
(Cr⁶⁺ test method excluded)



Sample Material	Digestion Acid
Steel, copper, aluminum, solder	Aqua regia, HNO ₃ , HCl, HF, H ₂ O ₂
Glass	HNO ₃ /HF
Gold, platinum, palladium, ceramic	Aqua regia
Silver	HNO ₃
Plastic	H ₂ SO ₄ , H ₂ O ₂ , HNO ₃ , HCl
Others	Any acid to total digestion

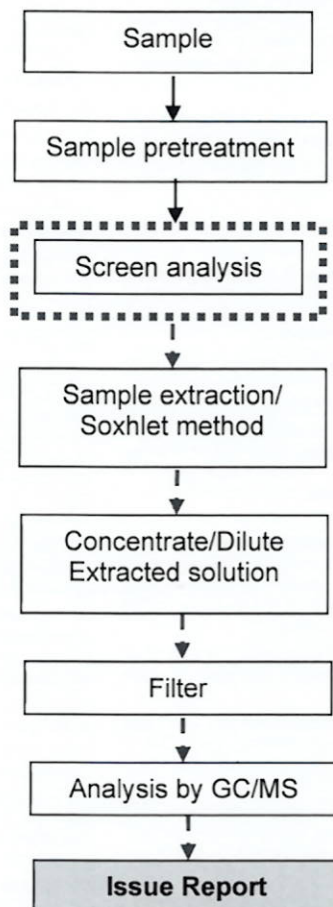
*** TO BE CONTINUED ***

This document is issued by the Company under its General Conditions of Service accessible at <http://www.sgs.com/en/Terms-and-Conditions.aspx>. Attention is drawn to the limitation of liability, indemnification and jurisdiction issues defined therein.

Any holder of this document is advised that information contained hereon reflects the Company's findings at the time of its intervention only and within the limits of Client's instructions, if any. The Company's sole responsibility is to its Client and this document does not exonerate parties to a transaction from exercising all their rights and obligations under the transaction documents. Any unauthorized alteration, forgery or falsification of the content or appearance of this document is unlawful and offenders may be prosecuted to the fullest extent of the law.

Flow chart of PBB/PBDE Testing

First testing process →
Optional screen process
Confirmation process - ·▶



*** END OF THE REPORT ***

This document is issued by the Company under its General Conditions of Service accessible at <http://www.sgs.com/en/Terms-and-Conditions.aspx>. Attention is drawn to the limitation of liability, indemnification and jurisdiction issues defined therein.

Any holder of this document is advised that information contained hereon reflects the Company's findings at the time of its intervention only and within the limits of Client's instructions, if any. The Company's sole responsibility is to its Client and this document does not exonerate parties to a transaction from exercising all their rights and obligations under the transaction documents. Any unauthorized alteration, forgery or falsification of the content or appearance of this document is unlawful and offenders may be prosecuted to the fullest extent of the law.

108557